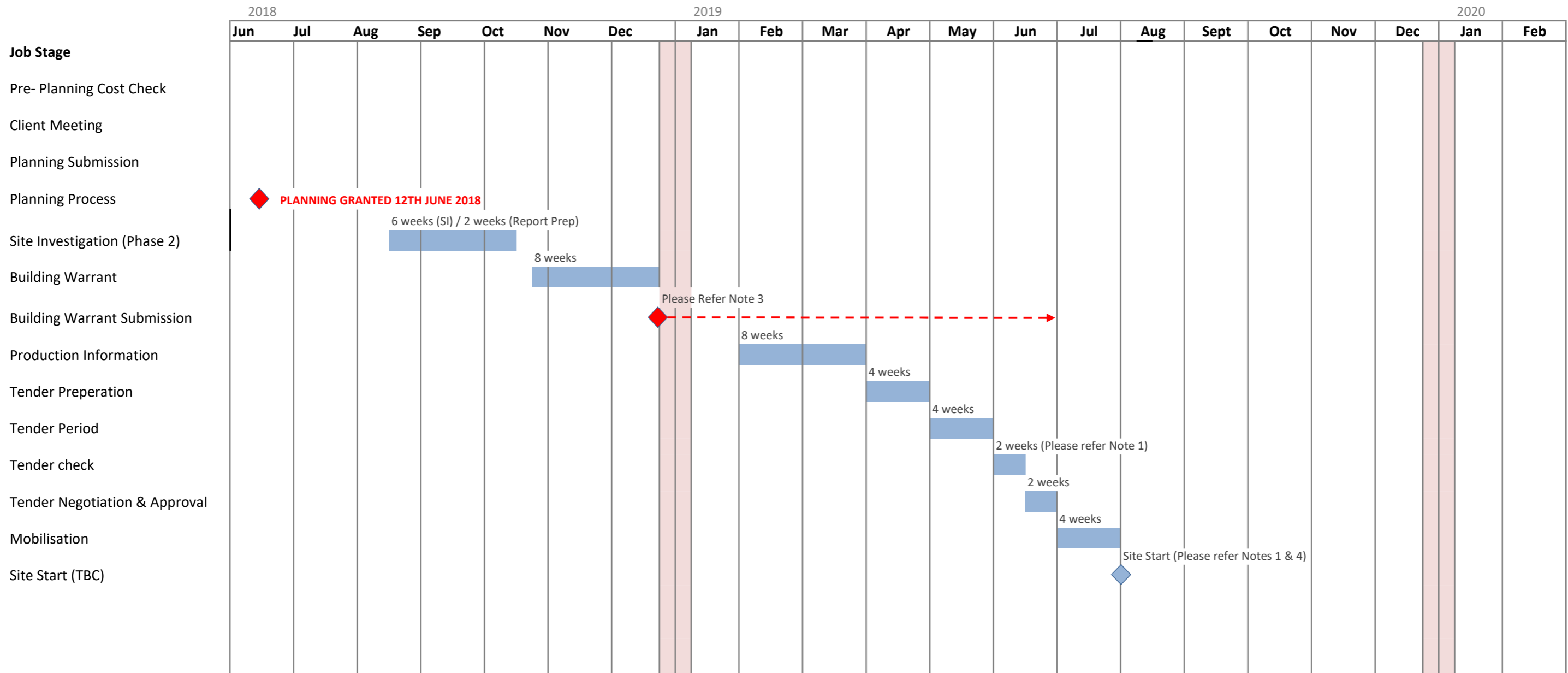


St Andrew's Parish Church, Barrhead

Programme October 2018 - REV B

JM Architects



- Note 1:** SITE START SUPPOSES THAT TENDERS COME IN WITHIN PRE TENDER COST PLAN. A TIME ALLOWANCE MAY BE REQUIRED TO RECONCILE ANY SUMS THAT EXCEED THE PRE TENDER COST PLAN.
- Note 2:** A TIME ALLOWANCE MAY BE REQUIRED TO ALLOW FOR THE SUBMISSION/REVIEW/DECISION RELATING TO ANY GRANT APPLICATIONS. TBC.
- Note 3:** THE POTENTIAL TIMESCALE ASSOCIATED WITH THE ASSESSMENT OF A BUILDING WARRANT APPLICATION IS PROJECT SPECIFIC. THEY AIM TO ISSUE AN INITIAL RESPOND TO APPLICATIONS WITHIN 35 DAYS.
- Note 4:** THE POTENTIAL TIMESCALE ASSOCIATED WITH THE ASSESSMENT OF A BUILDING WARRANT COULD IMPACT ON THE SITE START AS A BUILDING WARRANT REQUIRES TO BE GRANTED BEFORE WORKS CAN COMMENCE.

Revision	Notes	Date
A	DRAFT PROGRAMME UPDATED.	27.04.2018
B	DRAFT PROGRAMME UPDATED.	16.10.2018